



**TAGGART**  
— M O D U L A R —

# Taggart Modular

Taggart Modular is the modular construction division of Taggart Homes.

Taggart Homes was founded in 1989. Over the years it has built over 5 million sq foot of high-quality housing across the UK and Ireland. It is with this experience that Taggart Modular delivers the highest quality modular projects.

To this day, its three overriding principals remain:

- Quality** – the constant push for perfection in our people, our products, and, for innovation with emerging construction methods and materials.
- Integrity** – dedication to being an innovator in the industry and in doing the right thing for the right reasons.
- Value** – harnessing our bulk purchasing power and innovating supply chains to enable us to increase quality whilst lowering costs to deliver greater value to our customers.

Manufactured in Ireland. Delivered across Ireland, UK and Europe.





Due to the rising pressure for housing, Taggart Modular have developed this innovative and affordable solution for accommodation that is suitable for all types of use.

All units meet exceptional standards of fabrication – factory assembled using high degrees of accuracy and ensuring a very well insulated, low-energy and low-running cost accommodation.

These modular units have been designed using local materials and local labour, and have reduced the use of plastic throughout – where feasible, with a focus on natural and renewable or recyclable materials.

They are delivered complete with a turnkey finish, and can be relocated, added to, or moved with relative ease.





# The Quiet Living Collection

Inspired by some of Ireland's most prestigious estates and castles, The Quiet Living Collection is a curated range of luxury timber residences designed for modern living, hospitality, and income generation.

Crafted with timeless design, elegant finishes, and exceptional attention to detail, these are not simply modular units – they are professionally manufactured luxury homes built to the highest standards, including BER A Rated.

Designed and manufactured by Taggart Modular, each residence combines decades of construction expertise with premium materials, precision engineering, and refined craftsmanship to create homes that are durable, energy-efficient, and beautifully designed both inside and out.

The Quiet Living Collection has been specifically created to offer flexibility without compromise. Whether positioned within private gardens, hospitality developments, country estates, hotels, golf resorts, wellness retreats, glamping destinations, or tourism settings, each residence is designed to integrate naturally into its surroundings while delivering a premium living experience.

With modern lifting and installation capabilities, these homes can be carefully positioned into back gardens, private sites, hospitality venues, and rural settings with minimal disruption, opening up exciting opportunities for homeowners and businesses alike to create additional accommodation, lifestyle space, or valuable new income streams.

From the elegance of The Adare to the bold character of The Dromoland and the relaxed sophistication of The Glenlo, every residence within the collection has its own identity while sharing the same philosophy: beautifully designed luxury living with lasting quality and versatility at its core.

Can you also please replace the images again with the attached images.



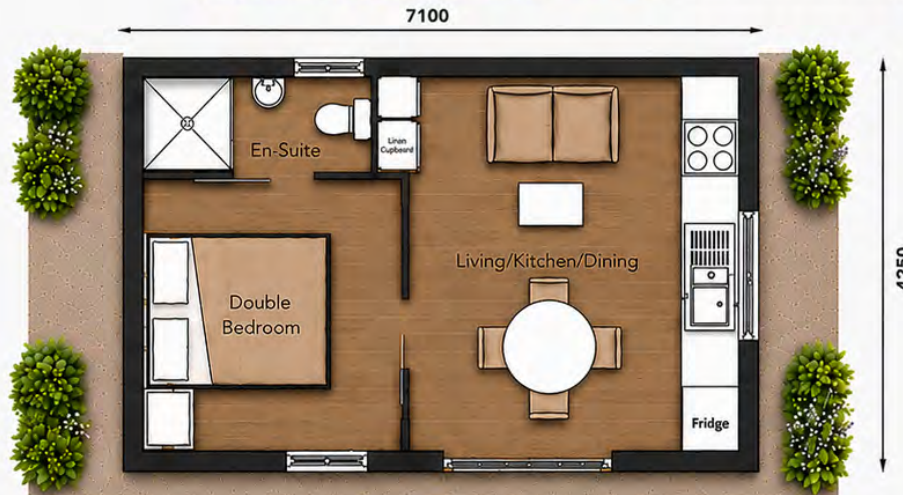
**30m<sup>2</sup>**  
TOTAL AREA

**1 BED** 

MODULAR LIVING,  
BEAUTIFULLY DESIGNED.

Smart design. Modern living.  
Built for the way you live.

BER Rated



#### WHAT YOU'LL LOVE

-  1 Spacious Bedroom
-  Open Plan Living
-  Stylish Kitchen with Pantry
-  Modern Bathroom
-  Compact & Efficient

\*Drawings are for illustrative purposes only and may not represent exact specifications or dimensions



COMPACT  
FOOTPRINT



LOW  
MAINTENANCE



THOUGHTFUL  
DESIGN



NATURAL LIGHT  
ALL DAY

*Live simply. Live beautifully.* 

The Ashford | 1 Bed Flat Roof – 30.1m<sup>2</sup>, 7100 x 4250 – €79,000

**30m<sup>2</sup>**  
TOTAL AREA

**1 BED** 

MODULAR LIVING,  
BEAUTIFULLY DESIGNED.

Smart design. Modern living.  
Built for the way you live.

BER Rated




WHAT YOU'LL LOVE


-  1 Spacious Bedroom
-  Open Plan Living
-  Stylish Kitchen with Pantry
-  Modern Bathroom
-  Compact & Efficient


\*Drawings are for illustrative purposes only and may not represent exact specifications or dimensions

 COMPACT FOOTPRINT

 LOW MAINTENANCE

 THOUGHTFUL DESIGN

 NATURAL LIGHT ALL DAY

*Live simply. Live beautifully.* 

The Adare | 1 Bed Pitched Roof – 30.1m<sup>2</sup>, 7100 x 4250 – €88,500

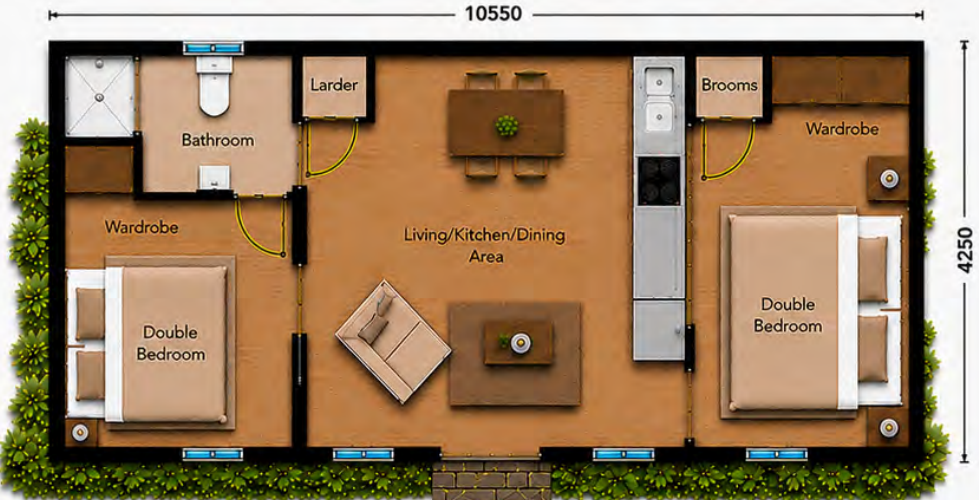
**45m<sup>2</sup>**  
TOTAL AREA

**2 BED** 

MODULAR LIVING,  
BEAUTIFULLY DESIGNED.

Smart design. Modern living.  
Built for the way you live.

BER Rated





**WHAT YOU'LL LOVE**


-  2 Spacious Bedrooms
-  Open Plan Living
-  Stylish Kitchen with Pantry
-  Modern Bathroom
-  Compact & Efficient

\*Drawings are for illustrative purposes only and may not represent exact specifications or dimensions

 COMPACT FOOTPRINT

 LOW MAINTENANCE

 THOUGHTFUL DESIGN

 NATURAL LIGHT ALL DAY

*Live simply. Live beautifully.* 

The Dromoland | 2 Bed Flat Roof – 45m<sup>2</sup>, 10550 x 4250 – €98,000

**45m<sup>2</sup>**  
TOTAL AREA

## 2 BED

MODULAR LIVING,  
BEAUTIFULLY DESIGNED.

Smart design. Modern living.  
Built for the way you live.

BER Rated



FRONT ELEVATION



### WHAT YOU'LL LOVE


-  2 Spacious Bedrooms
-  Open Plan Living
-  Stylish Kitchen with Pantry
-  Modern Bathroom
-  Compact & Efficient

\*Drawings are for illustrative purposes only and may not represent exact specifications or dimensions

 COMPACT FOOTPRINT

 LOW MAINTENANCE

 THOUGHTFUL DESIGN

 NATURAL LIGHT ALL DAY

*Live simply. Live beautifully. ♥*

The Cabra | 2 Bed Pitched Roof – 45m<sup>2</sup>, 10550 x 4250 – €107,500

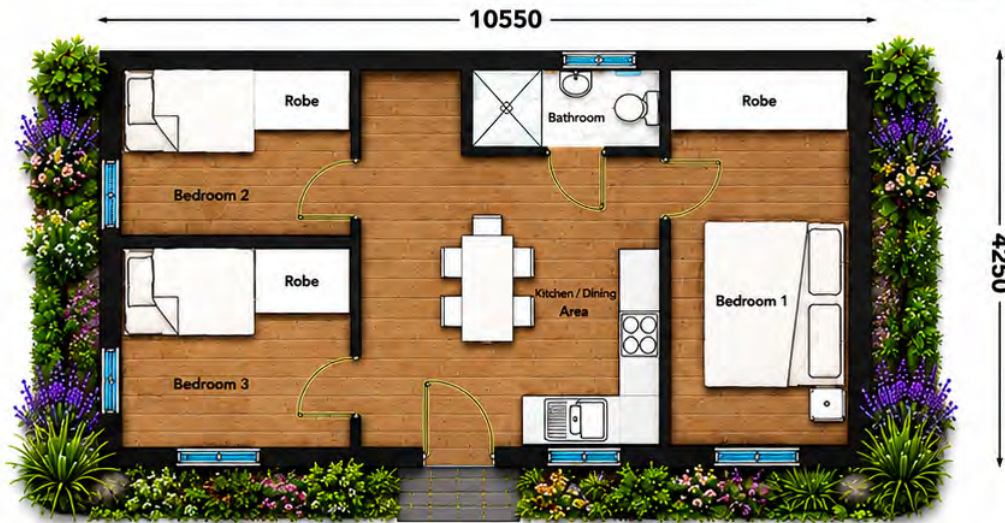
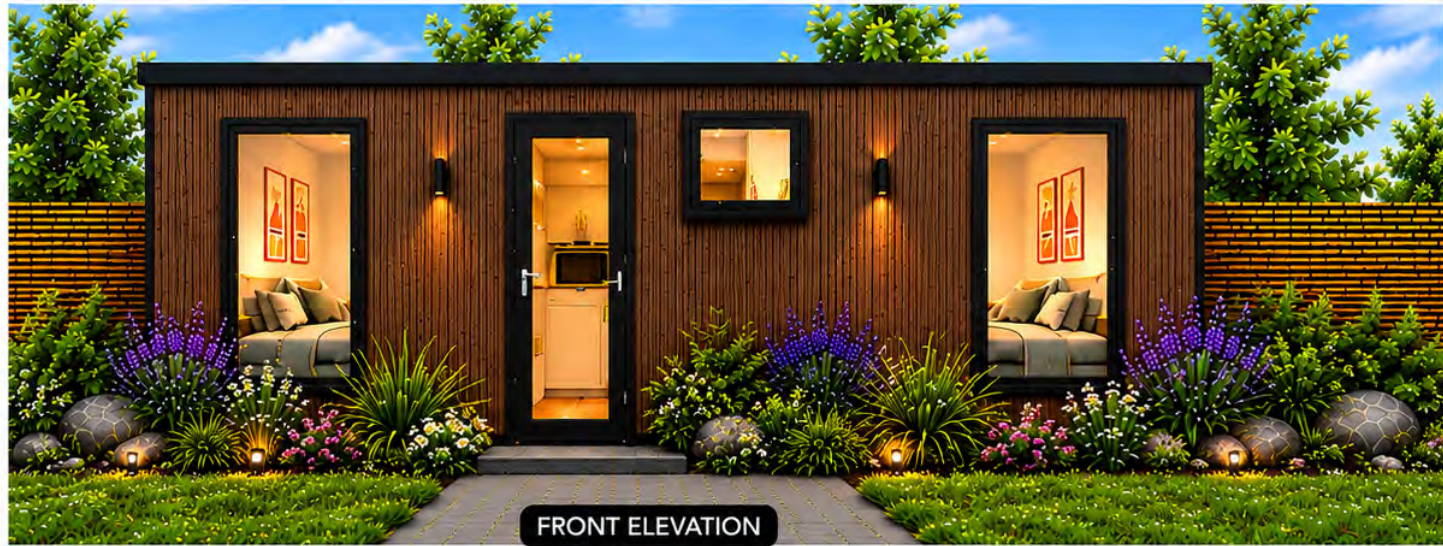
**45m<sup>2</sup>**  
TOTAL AREA

**3 BED** 

MODULAR LIVING,  
BEAUTIFULLY DESIGNED.

Smart design. Modern living.  
Built for the way you live.

BER Rated



**WHAT YOU'LL LOVE**

-  3 Spacious Bedrooms
-  Open Plan Living
-  Stylish Kitchen with Dining Area
-  Modern Bathroom
-  Compact & Efficient

\*Drawings are for illustrative purposes only and may not represent exact specifications or dimensions



COMPACT  
FOOTPRINT



LOW  
MAINTENANCE



THOUGHTFUL  
DESIGN



NATURAL LIGHT  
ALL DAY

*Live simply. Live beautifully. ♥*

The Hillsborough | 3 Bed Flat Roof – 45m<sup>2</sup>, 10550 x 4250 – €115,000

**45m<sup>2</sup>**  
TOTAL AREA

## 3 BED

MODULAR LIVING,  
BEAUTIFULLY DESIGNED.

Smart design. Modern living.  
Built for the way you live.

BER Rated



FRONT ELEVATION

10550



### WHAT YOU'LL LOVE

-  3 Spacious Bedrooms
-  Open Plan Living
-  Stylish Kitchen with Dining Area
-  Modern Bathroom
-  Compact & Efficient

\*Drawings are for illustrative purposes only and may not represent exact specifications or dimensions



COMPACT  
FOOTPRINT



LOW  
MAINTENANCE



THOUGHTFUL  
DESIGN



NATURAL LIGHT  
ALL DAY

*Live simply. Live beautifully. ♡*

The Glenlo | 3 Bed Pitched Roof – 45m<sup>2</sup>, 10550 x 4250 – €124,500

<b>Modular Specification</b>
<b>Exterior:</b>
Exterior lighting
Steel frame construction
PVC coated corrugated tin cladding (alternative finishes available on request)
Triple glazed windows and doors
<b>Interior:</b>
Fully insulated ceiling, walls and floor
Electrical installation completed and certified
Full interior electrical package
Kitchen complete with units, hob, oven and fridge
Painted interior walls and ceilings
Full turnkey finish
<b>BER Rated</b>

“

Nature is the greatest place  
to heal & recharge

”



Space is an inspirational concept  
that allows you to dream big.

- Peter Diamonds



For more information on layouts  
and specification, visit us at  
[www.irishmodularhomes.ie](http://www.irishmodularhomes.ie)



@taggartmodular



THE  
SHEPHERDS BAR

GUINNESS

MOËT & CHANDON  
CHAMPAGNE



# Shepherds Bar

Available for Hire. Please contact for details

## Shepherds Bar Specification

### Exterior:

Exterior lighting

Steel frame and chassis

Corrugated tin on walls & roof

Double glazed windows and door

Decking space for guests provided

### Interior:

Fully insulated ceiling, walls and floor

Electrics finished and certified

Herringbone wooden floor

Fully functioning bar fitted including taps, optics, fridge, freezer

Fully furnished with fixtures and fittings

Wood burning Stove



Interior View



# Shepherds Hut

Originally, Shepherd's Huts provided a shepherd with welcome shelter from unpredictable weather - as well as offering them a place to rest their head and escape from the elements during the lambing season, which would typically take place during the colder winter months. Historians have traced shepherd's huts back to 1596, where an early text reads 'the shepherd hath his cabin going upon a wheel for to move here and there at his pleasure'.

As with most things, methods slowly changed and large covered buildings allowed the flock to be housed close to the farm. By the 1950's many huts had either been pushed into a nearby wood or field corner, or repurposed as store rooms.

The increased demand in the already thriving staycation and glamping industry in recent years has led to an exponential revival of shepherd's huts as their popularity continues to grow. Glamping is the perfect blend of outdoor adventure and comfort. For many it is appealing to stay in amazing spaces where you can enjoy being amongst nature but still enjoy the comforts of home. It's one of the most restorative, exciting and inspiring ways to holiday. Shepherd's huts provide the perfect home away from home, which is the ideal glamping experience - they're solid, well insulated and provide space for all your needs.

The Shepherds Huts stay true to their original features, including having fully functioning wheels. This allows them to be moved short distances with minimal hassle, allowing you to easily move them from one spot to the next should you ever need to.





Shepherd's Hut  
20ft x 10ft, Open Plan  
€44,000



Shepherd's Hut  
25ft x 14ft, Two Bedroom  
€64,000

# Interior Views



## Shepherds Hut Specification

### Exterior:

Three exterior lights, two at the front, one at the rear

Steel frame and chassis

Corrugated tin on walls & roof  
(cement fibre board cladding available)

Double glazed windows and door

### Interior:

Fully insulated ceiling, walls and floor

Electrics finished and certified

Four double sockets and two bedside lights

TV point

Electric stove

Instant hot water

Kitchen with units, hob, oven and fridge.

Separate shower room - Electric 9.5 kw .900cm x 1m fully tiled

Sink with vanity unit and WC

Laminate floor

Provision for double bed with storage underneath

Bunk bed with ladder

Painted interior walls and ceilings

# Layouts



Option 1  
20 x 10ft



Option 2  
20 x 10ft



Two Bedroom  
25ft x 14ft



## Contact Us

We would love to hear from you. If you have any questions or queries please contact us on the below details.  
All viewings are appointment only.

Republic of Ireland: Jackie 083 208 1397  
N. Ireland and UK: Jackie 07864 727889,  
Michael 07795 032821

E: [sales@taggartmodular.com](mailto:sales@taggartmodular.com)  
[www.irishmodularhomes.ie](http://www.irishmodularhomes.ie)  
© @taggartmodular